



ARCHITECT OF RECORD

Abbey Moore
A.A.

ARCHITECT AND ASSOCIATES

979 7th STREET
SUITE A
DAVIS, CA 95614
(530) 758-0658
Email: aom@pccbell.net

MISSION RESIDENCES
225 'B' STREET
DAVIS, CALIFORNIA

EXTERIOR ELEVATIONS/ SECTIONS

REVISED:
10 JUNE 2010
10 AUGUST 2010

JOB #: 12-541
DATE ISSUED:

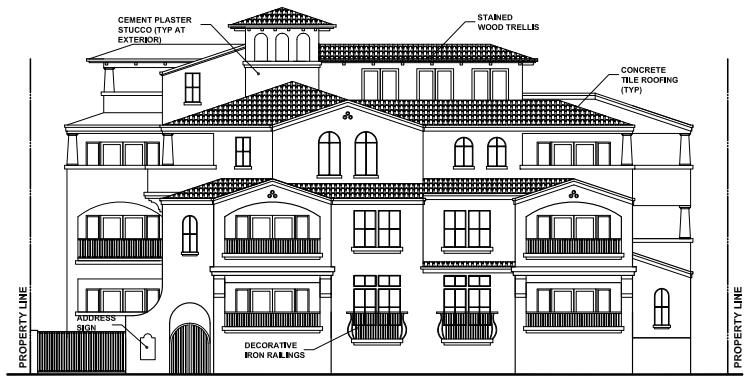
DRAWING NUMBER:

4

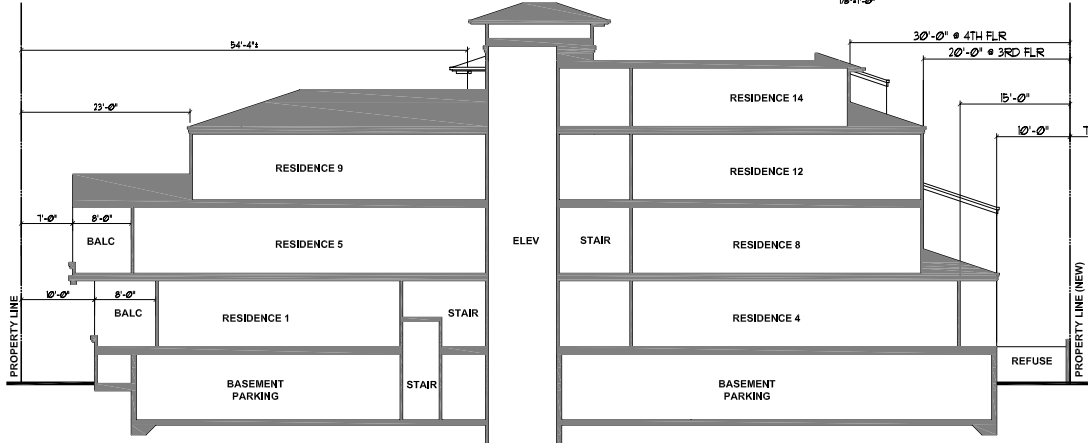
THIS DOCUMENT AND ITS CONTENT HAS BEEN PRODUCED FOR THIS SPECIFIC PROJECT BY, AND IS THE PROPERTY OF ABBEY MOORE, A.A., ARCHITECT. REUSE, REPRODUCTION, OR DUPLICATION, IN FULL OR PART, VIOLATES ANY RESPONSIBILITY OF THE AUTHOR, AND WITHOUT EXPRESS WRITTEN AUTHORIZATION IS PROHIBITED.



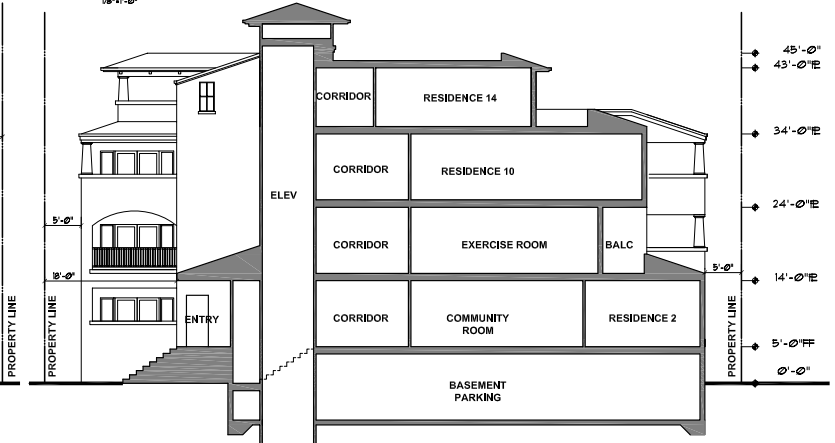
SOUTH ELEVATION
1/8" = 1'-0"



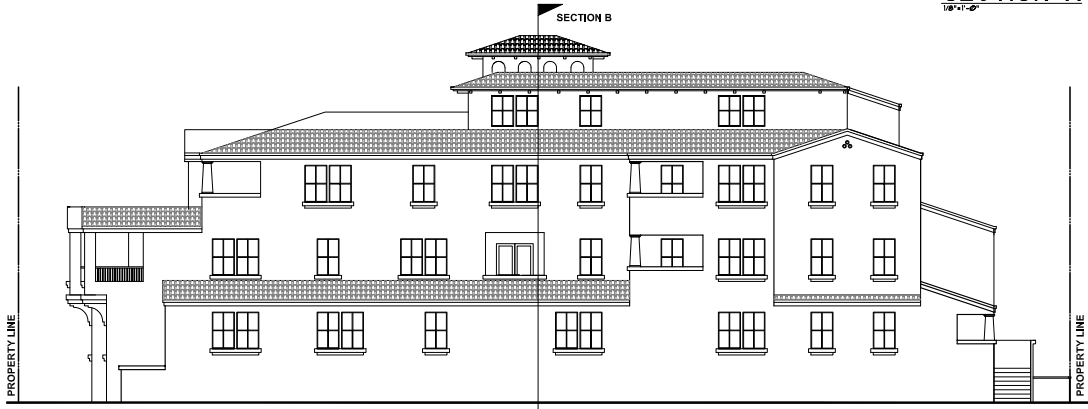
EAST (B STREET) ELEVATION
1/8" = 1'-0"



SECTION A
1/8" = 1'-0"



SECTION B
1/8" = 1'-0"



NORTH ELEVATION
1/8" = 1'-0"



WEST (ALLEY) ELEVATION
1/8" = 1'-0"